

Jam'n Hemp Co.

Sample 440-061026-095

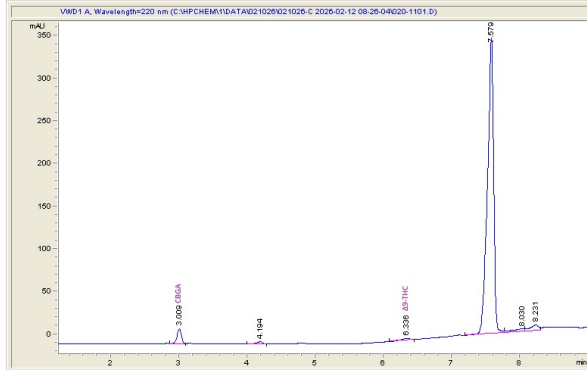
Rosin - Plantain

Sample Submitted: 06-10-2026; Report Date: 06-17-2026

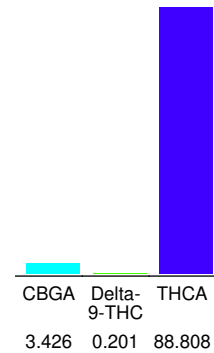
Rosin - Plantain

Extract / Concentrate

Chromatogram



Cannabinoid Profile



Cannabinoid Profile by HPLC

0.20%

Delta-9-THC

0.00%

CBD

92.44%

Total Cannabinoids

Cannabinoid	% wt	mg/g
CBGA	3.426	34.26
Delta-9-THC	0.201	2.01
THCA	88.81	888.08
Total Cannabinoids	92.44	924.4
Calculated Total THC	78.09	780.86
Calculated CBD Yield	0.00	0.00
Calculated Total THC = Delta-9-THC + 0.877 * THCA		
Calculated Maximum CBD Yield = CBD + 0.877 * CBDA		

Marin Analytics, LLC

250 Bel Marin Keys Blvd, Suite D4
Novato, CA 94949

833-321-TEST / info@marinanalytics.com

Mike Clemmons
Lab Manager

This sample has been tested by Marin Analytics, LLC using valid testing methodologies and a quality system. Values reported relate only to the sample tested. Marin Analytics, LLC makes no claims as to the efficacy, safety, or other risks associated with any detected or non-detected levels of any compounds reported herein. This Certificate shall not be reproduced except in full without the written approval of Marin Analytics, LLC. Copyright 2023 Marin Analytics, LLC All Rights Reserved.