

Jam'n Hemp Co.

Sample 440-061026-086

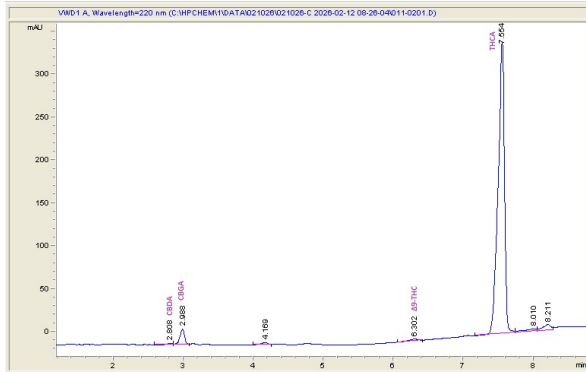
Rosin - Farmers Daughter

Sample Submitted: 06-10-2026; Report Date: 06-17-2026

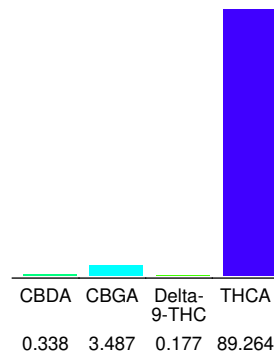
Rosin - Farmers Daughter

Extract / Concentrate

Chromatogram



Cannabinoid Profile



Cannabinoid Profile by HPLC

0.18%

Delta-9-THC

0.00%

CBD

93.27%

Total Cannabinoids

Cannabinoid	% wt	mg/g
CBDA	0.338	3.38
CBGA	3.487	34.87
Delta-9-THC	0.177	1.77
THCA	89.26	892.64
Total Cannabinoids	93.27	932.7
Calculated Total THC	78.46	784.62
Calculated CBD Yield	0.30	2.96
Calculated Total THC = Delta-9-THC + 0.877 * THCA		
Calculated Maximum CBD Yield = CBD + 0.877 * CBDA		

Marin Analytics, LLC

250 Bel Marin Keys Blvd, Suite D4
Novato, CA 94949

833-321-TEST / info@marinanalytics.com

Mike Clemmons
Lab Manager

This sample has been tested by Marin Analytics, LLC using valid testing methodologies and a quality system. Values reported relate only to the sample tested. Marin Analytics, LLC makes no claims as to the efficacy, safety, or other risks associated with any detected or non-detected levels of any compounds reported herein. This Certificate shall not be reproduced except in full without the written approval of Marin Analytics, LLC. Copyright 2023 Marin Analytics, LLC All Rights Reserved.