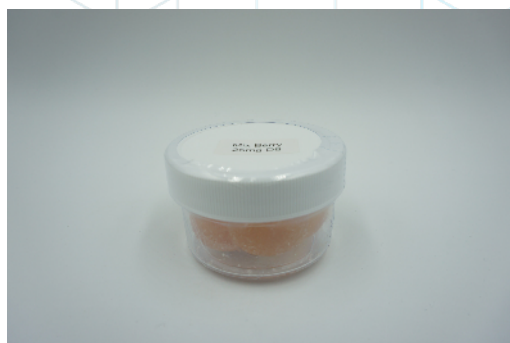


## 25mg D8

Sample ID: SA-211221-6255  
 Batch: 01-2365  
 Type: Finished Products  
 Matrix: Edible - Gummy

Received: 12/21/2021  
 Completed: 12/03/2021

**Client**  
 DENEX Hemp CO  
 15373 E Hinsdale Cir #A  
 Centennial, CO 80112  
 USA



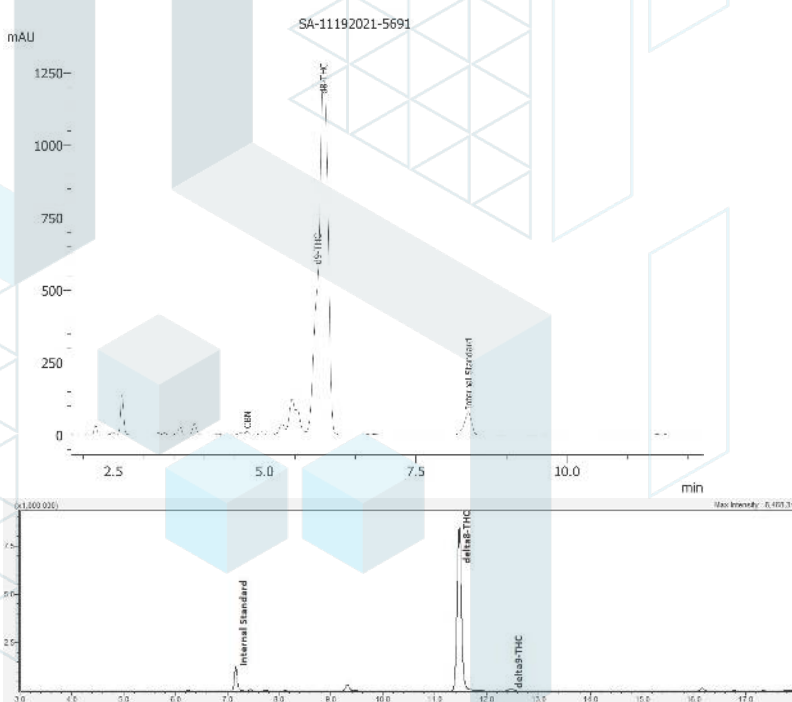
## Summary

Test	Date Tested	Status
Cannabinoids	12/03/2021	Tested

## Cannabinoids by HPLC-PDA and GC-MS/MS

<b>0.0199 %</b>	<b>0.505 %</b>	<b>0.526 %</b>	<b>Not Tested</b>	<b>Not Tested</b>	<b>Yes</b>
Total Δ9-THC	Δ8-THC	Total Cannabinoids	Moisture Content	Foreign Matter	Internal Marker Recovered

Analyte	LOD (%)	LOQ (%)	Result (%)
CBC	0.00009	0.00028	ND
CBCA	0.00018	0.00054	ND
CBCV	0.00006	0.00018	ND
CBD	0.00008	0.00024	ND
CBDA	0.00004	0.00013	ND
CBDV	0.00006	0.00018	ND
CBDVA	0.00002	0.00006	ND
CBG	0.00006	0.00017	ND
CBGA	0.00005	0.00015	ND
CBL	0.00011	0.00033	ND
CBLA	0.00012	0.00037	ND
CBN	0.00006	0.00017	0.000710
CBNA	0.00006	0.00018	ND
Δ8-THC	0.0001	0.00031	0.505
Δ9-THC	0.00008	0.00023	0.0199
Δ9-THCA	0.00008	0.00025	ND
Δ9-THCV	0.00007	0.00021	ND
Δ9-THCVA	0.00006	0.00019	ND
<b>Total Δ9-THC</b>			<b>0.0199</b>
<b>Total CBD</b>			<b>ND</b>
<b>Total</b>			<b>0.526</b>



ND = Not Detected; NT = Not Tested; LOD = Limit of Detection; LOQ = Limit of Quantitation; RL = Reporting Limit; Δ = Delta; Total Δ9-THC = Δ9-THCA \* 0.877 + Δ9-THC; Total CBD = CBDA \* 0.877 + CBD;



Generated By: Ryan Bellone  
 Commercial Director  
 Date: 12/21/2021



Tested By: Scott Caudill  
 Senior Scientist  
 Date: 12/03/2021





License No. 800025015  
FL License # CMTL-0003  
CLIA No. 10D1094068

## Certificate of Analysis

R&D

**Denex hemp Co**  
15373 E Hinsdale Cir #A  
CENTENNIAL, CO 80112

Batch # 01182022D8  
Batch Date: 2022-01-18  
Extracted From: Hemp

Test Reg State: Colorado

Order # INF220118-040001  
Order Date: 2022-01-18  
Sample # AACJ527

Sampling Date: 2022-01-24  
Lab Batch Date: 2022-01-24  
Completion Date: 2022-01-26

Initial Gross Weight: 7.193 g



Product Image



### Delta 8/Delta 10 Potency

12

Specimen Weight: 47.130 mg

Analyte	LOD (%)	LOQ (%)	Result (mg/g)	(%)
Delta-8 THC	0.000026	0.001	884.700	88.470
THCV	0.000007	0.001		<LOQ
Delta-9 THC	0.000013	0.001		<LOQ
Delta-10 THC	0.000003	0.001		<LOQ
CBN	0.000014	0.001		<LOQ
CBGA	0.000008	0.001		<LOQ
CBG	0.000248	0.001		<LOQ
CBDV	0.000065	0.001		<LOQ
CBDA	0.000001	0.001		<LOQ
CBD	0.000054	0.001		<LOQ
CBC	0.000018	0.001		<LOQ
THCA-A	0.000032	0.001		<LOQ

Tested  
(LCUV)



### Potency Summary

Total Delta 8 88.470%	Total Delta 10 None Detected
Total THC None Detected	Total CBD None Detected
Total CBG None Detected	Total CBN None Detected
Other Cannabinoids None Detected	Total Cannabinoids 88.470%

*Xueli Gao*  
Xueli Gao  
Ph.D., DABT  
Lab Toxicologist

*Aixia Sun*  
Aixia Sun  
D.H.Sc., M.Sc., B.Sc., MT (AAB)  
Lab Director/Principal Scientist



Definitions and Abbreviations used in this report: \*Total CBD = CBD + (CBD-A \* 0.877), \*Total CBDV = CBDV + (CBDVA \* 0.87), \*Total THC = THCA-A \* 0.877 + Delta 9 THC, \*Total THCV = THCV + (THCVA \* 0.87), \*CBG Total = (CBGA \* 0.877) + CBG, \*CBN Total = (CBNA \* 0.877) + CBN, \*Total CBC = CBC + (CBCA \* 0.877), \*Total THC-O-Acetate = Delta 8 THC-O-Acetate + Delta 9 THC-O-Acetate, \*Other Cannabinoids Total = Total Cannabinoids - All the listed cannabinoids on the summary section, \*Total Detected Cannabinoids = Delta8-THC + Total CBN + CBT + Delta8-THCV + Total CBG + Total CBD + Total THCV + CBL + Total THC + Total CBC + Total CBDV + Delta10-THC + Total THC-O-Acetate, \*Analyte Details above show the Dry Weight Concentrations unless specified as 12% moisture concentration. (mg/ml) = Milligrams per Milliliter, LOQ = Limit of Quantitation, LOD = Limit of Detection, Dilution = Dilution Factor (ppb) = Parts per Billion, (%) = Percent, (cfu/g) = Colony Forming Unit per Gram (cfu/g) = Colony Forming Unit per Gram, , LOD = Limit of Detection, (µg/g) = Microgram per Gram (ppm) = Parts per Million, (ppm) = (µg/g), (aw) = aw (area ratio) = Area Ratio, (mg/Kg) = Milligram per Kilogram, \*Measurement of Uncertainty = +/- 10%



This report shall not be reproduced, without written approval, from ACS Laboratory. The results of this report relate only to the material or product analyzed. Test results are confidential unless explicitly waived otherwise. Accredited by a third-party accrediting body as a competent testing laboratory pursuant to ISO/IEC 17025 of the International Organization for Standardization.



License No. 800025015  
FL License # CMTL-0003  
CLIA No. 10D1094068

## Certificate of Analysis

Compliance Test

**DENEX HEMP CO**  
15373 E HINSDALE CIR  
CENTENNIAL, CO 80112

Batch # 02-2022  
Batch Date: 2022-01-27

Test Reg State: Colorado

Production Date: 2022-01-27

Order # DEN220127-010001  
Order Date: 2022-01-27  
Sample # AACK511

Sampling Date: 2022-02-03  
Lab Batch Date: 2022-02-03  
Completion Date: 2022-02-06

Initial Gross Weight: 17.798 g



Product Image

**H** Heavy Metals  
Passed

**P** Residual  
Solvents  
Passed

*Xueli Gao*  
Xueli Gao  
Ph.D., DABT  
Lab Toxicologist

*Aixia Sun*  
Aixia Sun  
D.H.Sc., M.Sc., B.Sc., MT (AAB)  
Lab Director/Principal Scientist



Definitions and Abbreviations used in this report: \*Total CBD = CBD + (CBD-A \* 0.877), \*Total CBDV = CBDV + (CBDVA \* 0.87), \*Total THC = THCA-A \* 0.877 + Delta 9 THC, \*Total THCV = THCV + (THCVA \* 0.87), \*CBG Total = (CBGA \* 0.877) + CBG, \*CBN Total = (CBNA \* 0.877) + CBN, \*Total CBC = CBC + (CBCA \* 0.877), \*Total THC-O-Acetate = Delta 8 THC-O-Acetate + Delta 9 THC-O-Acetate, \*Other Cannabinoids Total = Total Cannabinoids - All the listed cannabinoids on the summary section, \*Total Detected Cannabinoids = Delta8-THC + Total CBN + CBT + Delta8-THCV + Total CBG + Total CBD + Total THCV + CBL + Total THC + Total CBC + Total CBDV + Delta10-THC + Total THC-O-Acetate, \*Analyte Details above show the Dry Weight Concentrations unless specified as 12% moisture concentration. (mg/ml) = Milligrams per Milliliter, LOQ = Limit of Quantitation, LOD = Limit of Detection, Dilution = Dilution Factor (ppb) = Parts per Billion, (%) = Percent, (cfu/g) = Colony Forming Unit per Gram (cfu/g) = Colony Forming Unit per Gram, , LOD = Limit of Detection, (µg/g) = Microgram per Gram (ppm) = Parts per Million, (ppm) = (µg/g), (aw) = aw (area ratio) = Area Ratio, (mg/Kg) = Milligram per Kilogram, \*Measurement of Uncertainty = +/- 10%

This report shall not be reproduced, without written approval, from ACS Laboratory. The results of this report relate only to the material or product analyzed. Test results are confidential unless explicitly waived otherwise. Accredited by a third-party accrediting body as a competent testing laboratory pursuant to ISO/IEC 17025 of the International Organization for Standardization.



License No. 800025015  
FL License # CMTL-0003  
CLIA No. 10D1094068

## Certificate of Analysis

Compliance Test

**DENEX HEMP CO**  
15373 E HINSDALE CIR  
CENTENNIAL, CO 80112

Batch # 02-2022  
Batch Date: 2022-01-27

Test Reg State: Colorado

Production Date: 2022-01-27

Order # DEN220127-010001  
Order Date: 2022-01-27  
Sample # AACK511

Sampling Date: 2022-02-03  
Lab Batch Date: 2022-02-03  
Completion Date: 2022-02-06

Initial Gross Weight: 17.798 g



### Residual Solvents - CO

Specimen Weight: 11.300 mg

**Passed**  
(GCMS)

Dilution Factor: 1.000

Analyte	LOQ (ppm)	Action Limit (ppm)	Result (ppm)	Analyte	LOQ (ppm)	Action Limit (ppm)	Result (ppm)
Acetone	2.08	1000	<LOQ	Isopropyl alcohol	1.39	1000	<LOQ
Benzene	0.02	2	<LOQ	Methanol	0.69	600	<LOQ
Butanes	2.5	1000	<LOQ	Pentane	2.08	1000	<LOQ
Ethanol	2.78	1000	<LOQ	Propane	5.83	1000	<LOQ
Ethyl Acetate	1.11	1000	<LOQ	Toluene	2.92	180	<LOQ
Heptane	1.39	1000	<LOQ	Total Xylenes	2.92	430	<LOQ
Hexane	1.17	60	<LOQ				



### Heavy Metals - CO

Specimen Weight: 254.110 mg

**Passed**  
(ICP-MS)

Dilution Factor: 196.765

Analyte	LOQ (ppb)	Action Limit (ppb)	Result (ppb)	Analyte	LOQ (ppb)	Action Limit (ppb)	Result (ppb)
Arsenic (As)	100	1500	<LOQ	Lead (Pb)	100	500	<LOQ
Cadmium (Cd)	100	500	<LOQ	Mercury (Hg)	100	1500	<LOQ

Xueli Gao  
Ph.D., DABT  
Lab Toxicologist

Aixia Sun  
D.H.Sc., M.Sc., B.Sc., MT (AAB)  
Lab Director/Principal Scientist



Definitions and Abbreviations used in this report: \*Total CBD = CBD + (CBD-A \* 0.877), \*Total CBDV = CBDV + (CBDVA \* 0.87), \*Total THC = THCA-A \* 0.877 + Delta 9 THC, \*Total THCV = THCV + (THCVA \* 0.87), \*CBG Total = (CBGA \* 0.877) + CBG, \*CBN Total = (CBNA \* 0.877) + CBN, \*Total CBC = CBC + (CBCA \* 0.877), \*Total THC-O-Acetate = Delta 8 THC-O-Acetate + Delta 9 THC-O-Acetate, \*Other Cannabinoids Total = Total Cannabinoids - All the listed cannabinoids on the summary section, \*Total Detected Cannabinoids = Delta8-THC + Total CBN + CBT + Delta8-THCV + Total CBG + Total CBD + Total THCV + CBL + Total THC + Total CBC + Total CBDV + Delta10-THC + Total THC-O-Acetate, \*Analyte Details above show the Dry Weight Concentrations unless specified as 12% moisture concentration. (mg/ml) = Milligrams per Milliliter, LOQ = Limit of Quantitation, LOD = Limit of Detection, Dilution = Dilution Factor (ppb) = Parts per Billion, (%) = Percent, (cfu/g) = Colony Forming Unit per Gram (cfu/g) = Colony Forming Unit per Gram, LOD = Limit of Detection, (µg/g) = Microgram per Gram (ppm) = Parts per Million, (ppm) = (µg/g), (aw) = aw (area ratio) = Area Ratio, (mg/Kg) = Milligram per Kilogram, \*Measurement of Uncertainty = +/- 10%

This report shall not be reproduced, without written approval, from ACS Laboratory. The results of this report relate only to the material or product analyzed. Test results are confidential unless explicitly waived otherwise. Accredited by a third-party accrediting body as a competent testing laboratory pursuant to ISO/IEC 17025 of the International Organization for Standardization.